

Mechanical steel finger bridge joints

Uses

Fosroc ETIC EJF steel finger bridge joints are designed for high movement joints in elevated bridge structures including;

- Highway bridge decks
- Trafficked access decks in elevated structures
- Ramps
- Overpasses

Advantages

- Provides high movement accommodation up to 650mm
- Steel finger joint design protecting the waterproof seal
- Support heavy traffic loads
- Accommodates skew movements
- High durability
- Prestressed tie-bolts encased in PVC sleeve for easy removal

Description

Fosroc ETIC EJF bridge joints comprise steel fingers protecting an elastomeric waterproofing seal.

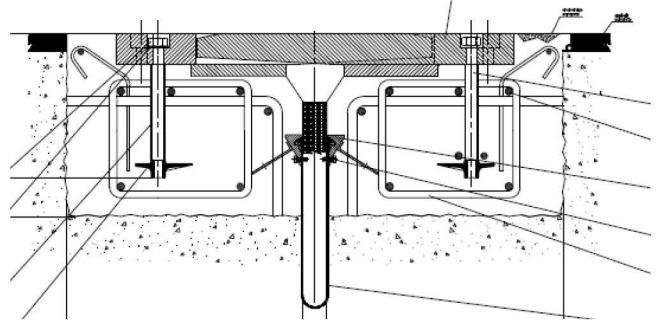
They are supplied in module lengths designed to be bolted to the structural deck on either side of the expansion joint. A range of modules are available to accommodate movement up to 500mm providing a waterproof joint and a wear resistant surface.

Specification

The Fosroc ETIC EJF mechanical finger joints shall be manufactured from steel and include a protected elastomeric waterproof seal. Prestressed tie-bolts secure the joints to the structure and include a PVC sleeve to facilitate easy removal. Units comply with AASHTO and EN standards.

Standards compliance

AASHTO and EN standards.



Type	Movement (mm)	Width (mm)	Closed Gap (mm)
EJF 200	200	150-250	50
EJF 250	250	175-300	50
EJF 300	300	200-350	50
EJF 350	350	225-400	50
EJF 400	400	250-450	50
EJF 450	450	275-500	50
EJF 500	500	300-550	50
EJF 650	650	375-700	50



Important note

Fosroc products are guaranteed against defective materials and manufacture and are sold subject to its standard Conditions for the Supply of Goods and Services, copies of which may be obtained on request. Whilst Fosroc endeavours to ensure that any advice, recommendation, specification of information it may give is accurate and correct, it cannot, because it has no direct or continuous control over where or how its products are applied, accept any liability either directly or indirectly arising from the use of its products, whether or not in accordance with any advice, specification, recommendation or information given by it. For latest version of this datasheet please contact your local representative.

Instruction for use

Surface preparation

For new concrete provide a recess either side of the joint to the correct size of EJF joint.

For existing concrete structures saw-cut asphalt and break out a recess to correct size of EJF joint.

Install additional steel reinforcement as required.

Installation

Install temporary polystyrene between the structure in the gap.

Install the waterproof elastomeric seal.

Assemble the steel finger elements and prestressed tie-bolts.

Adjust to the correct distance between the aluminium fingers.

Grout recess encapsulating bolts and levelling with adjacent asphalt with Fosroc Conbextra HF

Storage

Store in a clean, dry ventilated place.

Precautions

Health and Safety

There are no health hazards associated with Fosroc ETIC EJF joints in normal use

Supply

Fosroc ETIC EJF joints	1m long modules
------------------------	-----------------

Fosroc® is a trademark of Fosroc International Limited.
ETIC® is a trademark of Equipements Techniques pour l'Industrie de la Construction.



Important note

Fosroc products are guaranteed against defective materials and manufacture and are sold subject to its standard Conditions for the Supply of Goods and Services, copies of which may be obtained on request. Whilst Fosroc endeavours to ensure that any advice, recommendation, specification of information it may give is accurate and correct, it cannot, because it has no direct or continuous control over where or how its products are applied, accept any liability either directly or indirectly arising from the use of its products, whether or not in accordance with any advice, specification, recommendation or information given by it. For latest version of this datasheet please contact your local representative.